

An abstract painting with a dense, textured surface. The composition is dominated by bold, expressive brushstrokes in a wide range of colors, including deep blues, vibrant yellows, rich pinks, fiery oranges, and stark blacks. The overall effect is one of dynamic energy and complex visual relationships between the various hues and textures.

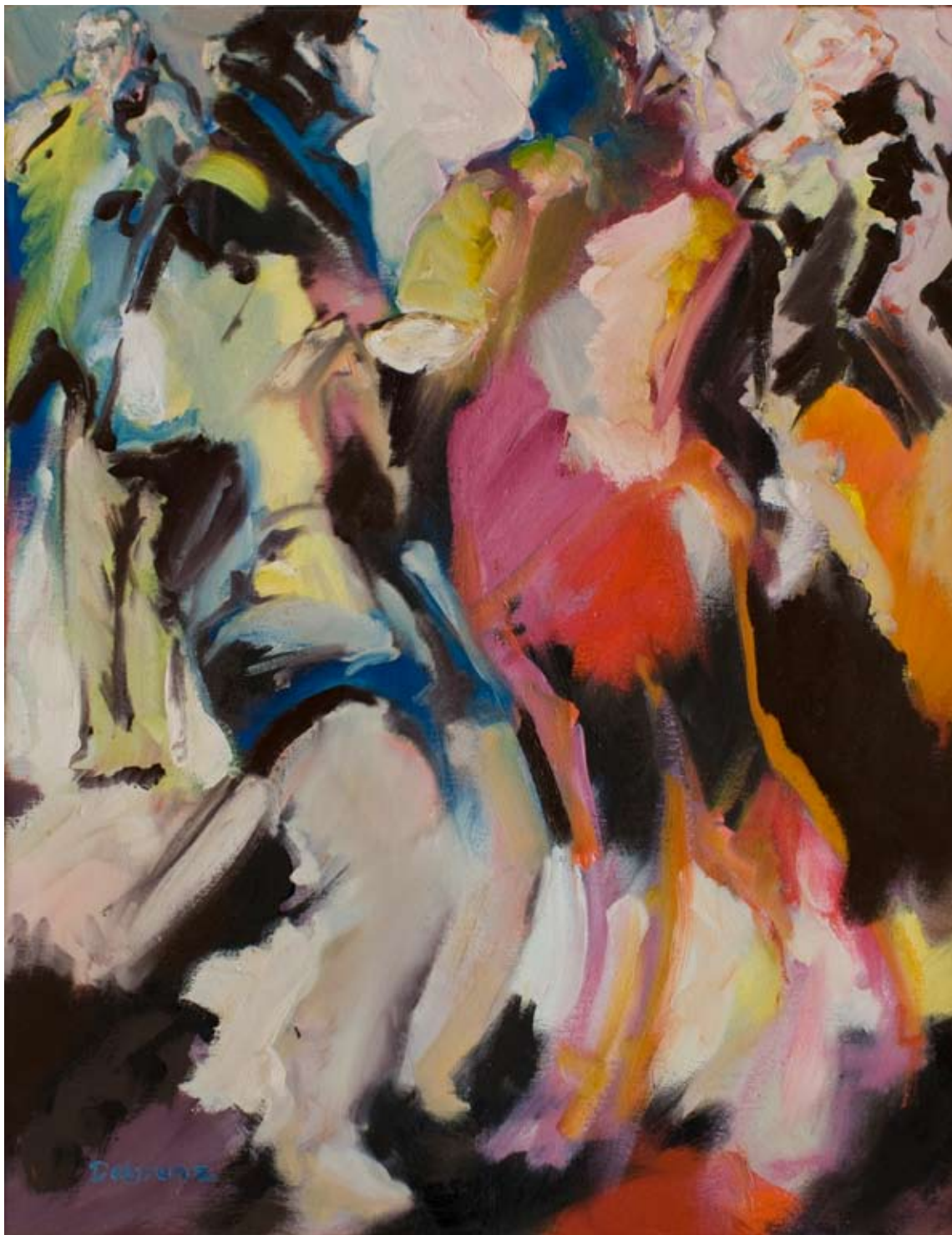
# Klaus Dobrunz

September 2010

Dobrunz



Klaus Dobrunz ©



Moskau 3, Öl auf Leinwand, 90 x 70 cm



Klaus Dobrunz ©



Rom 4, Öl auf Leinwand, 90 x 70 cm



Klaus Dobrunz ©



Bianca, Eiche, h 43 cm

Bärbel, Eiche, h 43 cm



Klaus Dobrunz ©



Mirco Eiche, h 46 cm

Galotschka, Eiche, h 39 cm

Gerhild, Eiche, h 44 cm



Klaus Dobrunz ©



Sonny, Eiche, h 46 cm



Heike, Eiche, h 43 cm



Klaus Dobrunz ©



Gabi, Eiche, h 39 cm

Mo, Eiche, h 45 cm

Modest, Eiche, h 50 cm



Klaus Dobrunz ©



Pieter, Eiche, h 48 cm



Primin, Eiche, h 47 cm